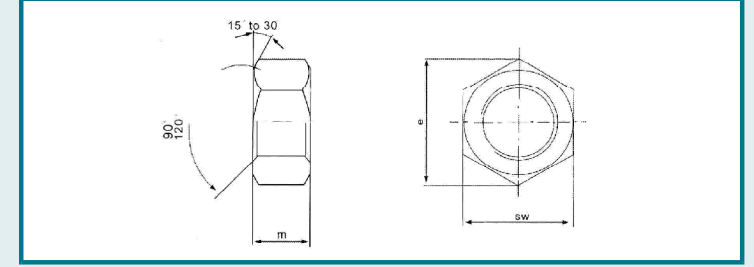


"DIN 934"



HEXAGON NUT ALTİKÖŞE SOMUN SECHSKANTMUTTERN



Technical informations. / Teknik bilgiler.

Thread size / Anma çapı		M3	M4	M5	M6	M7	M8	M10	M12	M14	M16	M18	M20	M22	M24	M27
Pitch / Diş adımı	P	0.50	0.70	0.80	1.00	1.00	1.25	1.50	1.75	2.00	2.00	2.50	2.50	2.50	3.00	3.00
Head width/Anahtar a.	sw	5.5	7	8	10	11	13	17	19	22	24	27	30	32	36	41
Diagonal/Köşegen	e	6.01	7.74	8.87	11.05	12.12	14.38	18.90	21.10	24.49	26.75	30.14	33.53	35.72	39.98	45.69
Height/Yükseklik	m	2.4	3.2	4	5	5.5	6.5	8	10	11	13	15	16	18	19	22
	min.	2.10	2.90	3.70	4.70	5.20	6.14	7.64	9.64	10.30	12.30	14.30	14.90	16.90	17.90	20.50
Weight/Ağırlık	gr/p.	0.38	0.81	1.23	2.50	3.12	5.20	11.6	17.3	25.0	33.3	49.4	64.4	79.0	110	165

Thread size / Anma çapı		M30	M33	M36	M39	M42	M45	M48	M52	M56	M60	M64	M68	M72	M76	M80
Pitch / Diş adımı	P	3.50	3.50	4.00	4.00	4.50	4.50	5.00	5.00	5.50	5.50	6.00	6.00	-	-	-
Head width/Anahtar a.	sw	46	50	55	60	65	70	75	80	85	90	95	100	105	110	115
Diagonal/Köşegen	e	51.29	55.80	61.31	66.96	72.61	78.26	83.91	89.56	95.07	99.21	104.86	110.51	116.16	121.81	127.46
Height/Yükseklik	m	24	26	29	31	34	36	38	42	45	48	51	54	58	61	64
	min.	22.50	24.00	27.00	28.50	32.40	34.40	36.40	40.40	43.40	46.40	49.10	52.10	56.10	59.10	62.10
Weight/Ağırlık	gr/p.	223	288	393	502	652	800	977	1220	1420	1690	1980	2300	2670	3040	3440

Values are given in millimeters. / Değerler milimetre olarak verilmiştir.